

4 Activating and Reading the E-Coder)R900/

How to Activate LCD Using the Solar Panel

The E-Coder)R900/ has a solar panel to power the LCD display. See Figure 4.

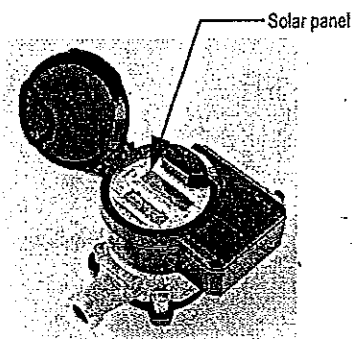


Figure 4 Solar Panel for E-Coder)R900/

The solar panel activates the LCD display when the unit is exposed to a light source. If the LCD does not reactivate as expected, try shining a flashlight on the light sensor. See Figure 5.

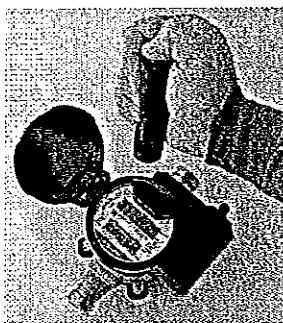


Figure 5 Activating E-Coder)R900/

Common Causes of Leaks

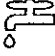
If the leak indicator is flashing or continuously on, the E-Coder)R900I is indicating that a possible leak can exist. Leaks can result from various circumstances. To better help you identify a possible leak, the following table contains some common causes of leak problems.

Table 3 Possible Leaks

Possible Cause of Leak	Intermittent Leak	Continuous Leak
Outside faucet, garden or sprinkler system leaking	✓	✓
Toilet valve not sealed properly	✓	✓
Toilet running		✓
Faucet in kitchen or bathrooms leaking	✓	✓
Ice maker leaking		✓
Soaker hose in use		✓
Leak between the water meter and the house		✓
Washing machine leaking	✓	✓
Dishwasher leaking	✓	✓
Hot water heater leaking		✓
Watering yard for more than eight hours	✓	✓
Continuous pet feeder		✓
Water-cooled air conditioner or heat pump	✓	✓
Filling a swimming pool		✓
Any continuous use of water for 24 hours		✓

If Intermittent Leak is Repaired

If an intermittent leak is found and repaired, complete the following steps:

- 1 Check the  leak icon after at least 24 hours.
- 2 If the leak has been correctly repaired, the leak icon changes from flashing to OFF.

Software

A software update is required for the N_SIGHT™ host software to interpret the enhanced data communicated feature from the Neptune E-Coder)R900i.